

INTEGRITY · QUALITY



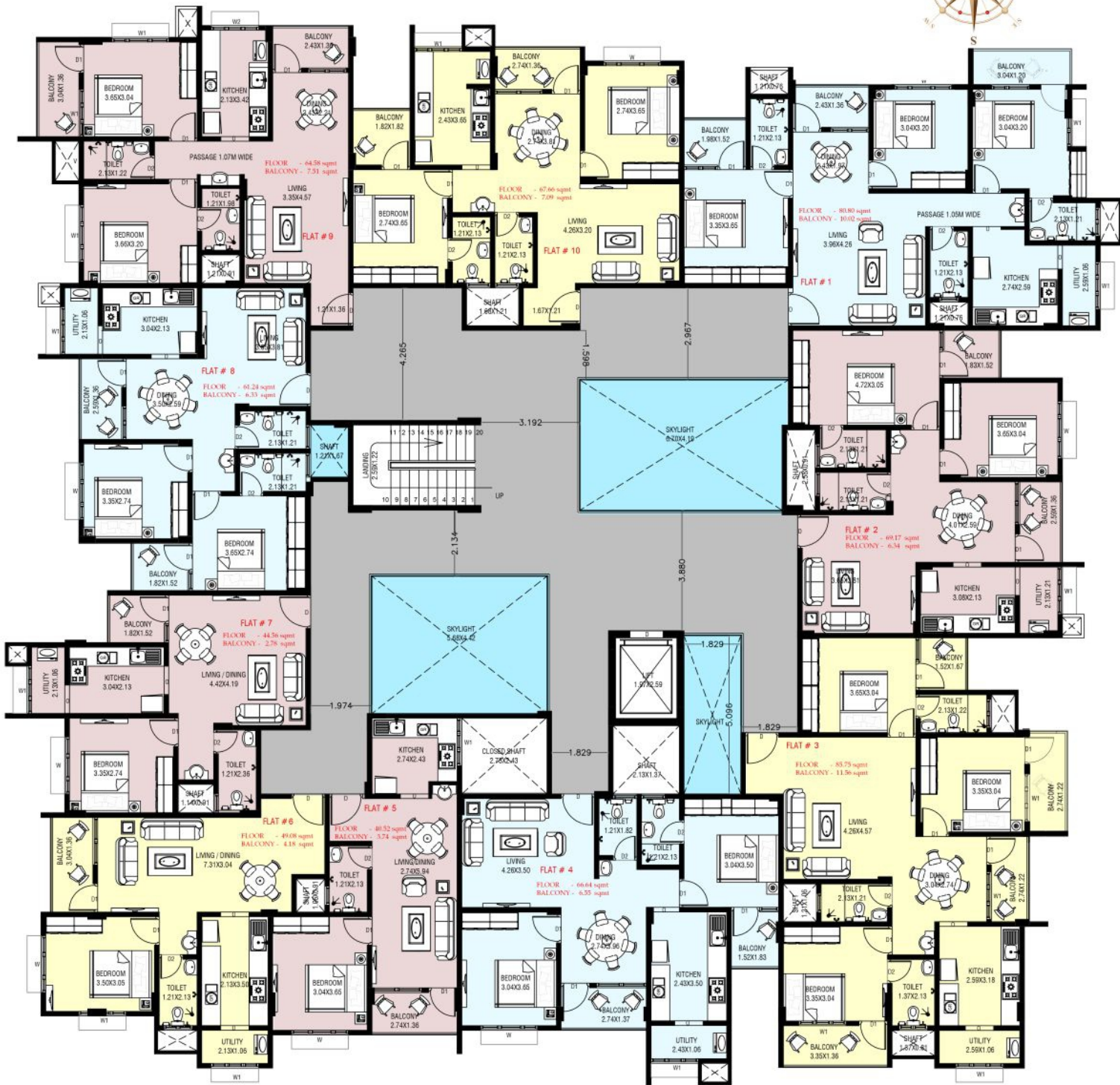
aashraya  
KALSANKA, UDUPI



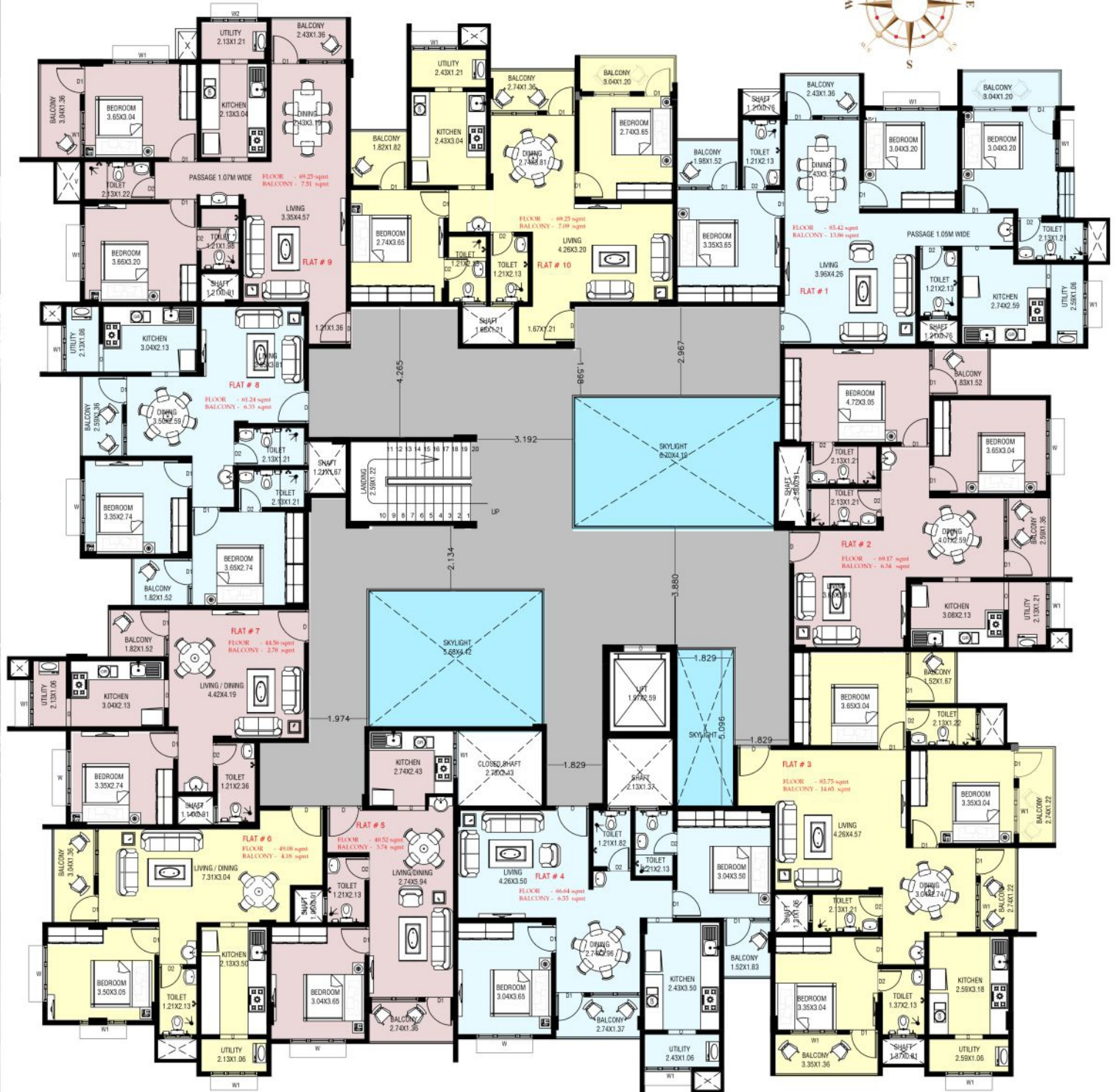
aashraya  
KALSANKA, UDUPI



# GROUND FLOOR PLAN

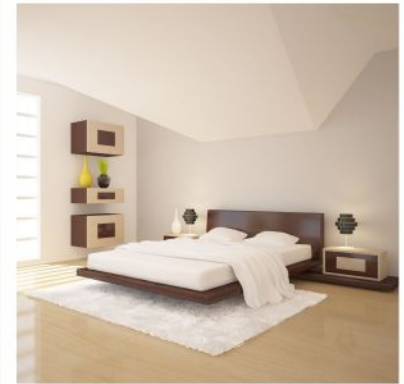


# TYPICAL FLOOR PLAN



CONCEPTS





## AMENITIES

- Children's play area
- Gymnasium
- KONE / OTIS equivalent stretcher lift
- Intercom facility
- Generator back up for each Apt, common areas and lift.
- Utility with w/m point attached to kitchen.
- Reticulated cooking gas connection.
- Metropull concealed valve plumbing.
- Rest room for security guard.
- UGD Connectivity
- STP

## SPECIFICATIONS

- RCC structure
- Vitrified flooring for entire flat.
- Kitchen will have black granite platform with SS sink with drain board
- 2 feet dado around the platform
- Provision for exhaust fan in kitchen and bathrooms
- Provision for water purifier in kitchen
- Toilets will have anti skid flooring with ceiling height dado
- Underground sump and overhead water tank.
- Electrical wiring will be enclosed of Finolex/Anchor or equivalent brand
- Bath fittings of Jaquar or equivalent brand
- Hot and cold water mixer
- All interior doors will be superior quality flush doors.
- Bathroom doors will be of FRP Flush type
- Main door will be of premium quality Teakwood finish with wooden frames
- Covered parking for cars
- Powder coated aluminium sliding window
- Internal wall painted with oil bound distemper
- External plastering with water proof treatment
- Television and Telephone point in the master living room
- Asian Paints Apex or equivalent exterior paint
- M.S Balcony railings

## SAFETY

- Intercom facility from watchman cabin to each Apartment.
- Round the clock security.
- M.S Grills for all windows.
- Heavy duty locks from Europa or equivalent for the main door.
- Well lit compound wall and open spaces.
- CCTV security cover for entire property



# LOCATION



## P R O X I M I T Y

1. Vidyodaya Public School - 1 km
2. Gandhi Hospital - 700 mtrs
3. Udupi city bus stand - 800 mtrs
4. Krishna temple - 800 mtrs
5. Nilgiris Super Market - 600 mtrs
6. Indrali Railway station - 3.6 Km
7. National Highway 66 - 3 km

INTEGRITY . QUALITY

# **KHAIN**<sup>®</sup> PROPERTIES

No. 13-3-31 E, 2nd Floor, Devaraj Towers,

Court Road, Udupi - 576 101.

Ph: 0820 4295855. Mob: +91 92433 05855

E-mail: admin@khainproperties.com

MEMBER OF  
**CREDAI**  
UDUPI

[www.khainproperties.com](http://www.khainproperties.com)

Architects & Structural Consultant:

**Simons & Associates**

Architects, Interior Designers & Project Management Consultants

Ph: 0820 - 2534846

Legal Advisor:

**Adv. Ganesh Kumar Mattu B.Sc., LLB**

Mob: +91 98448 72844